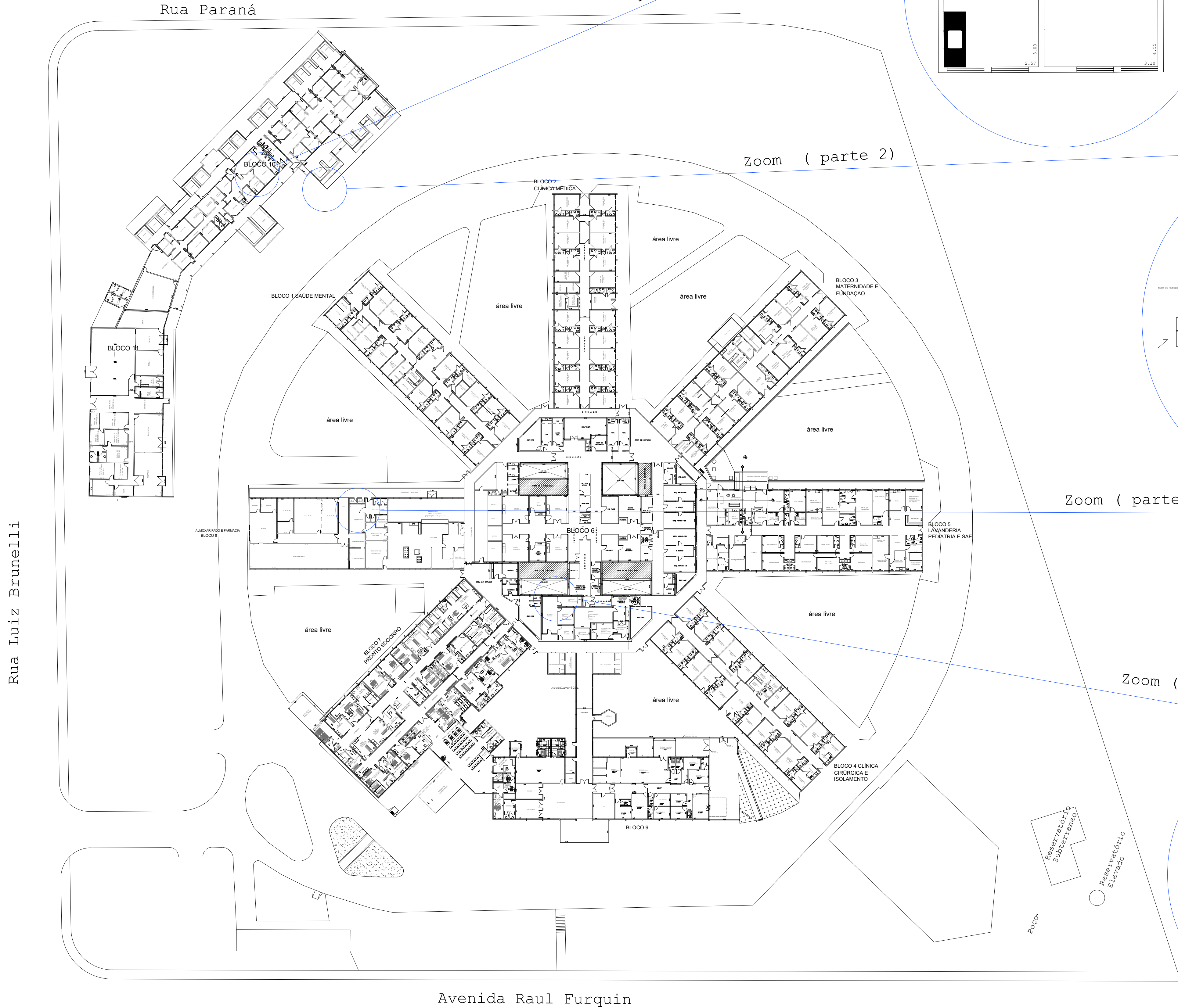
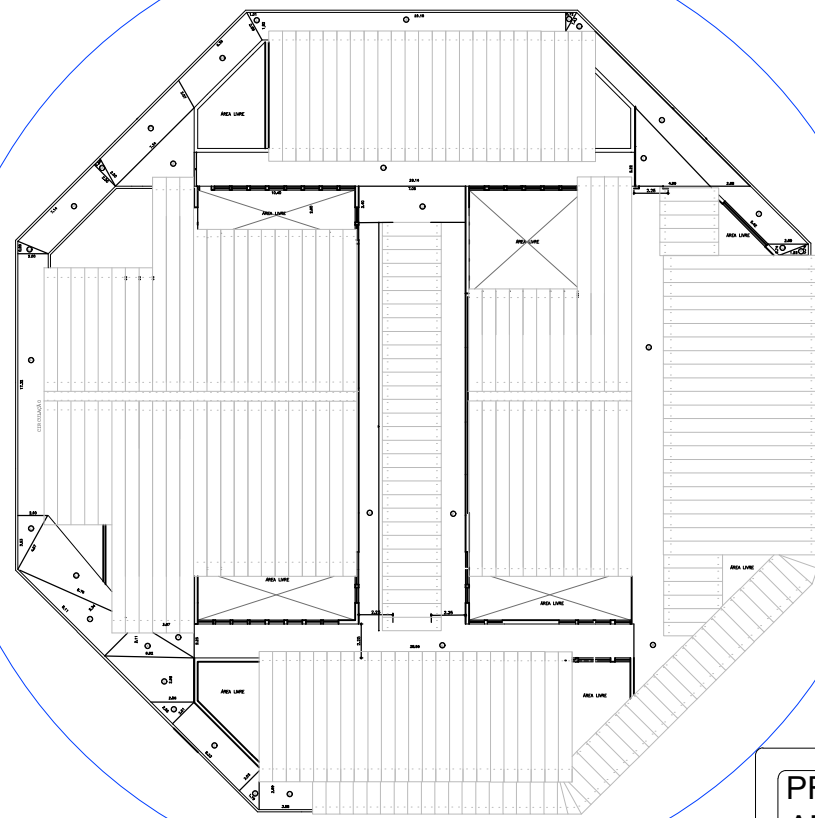
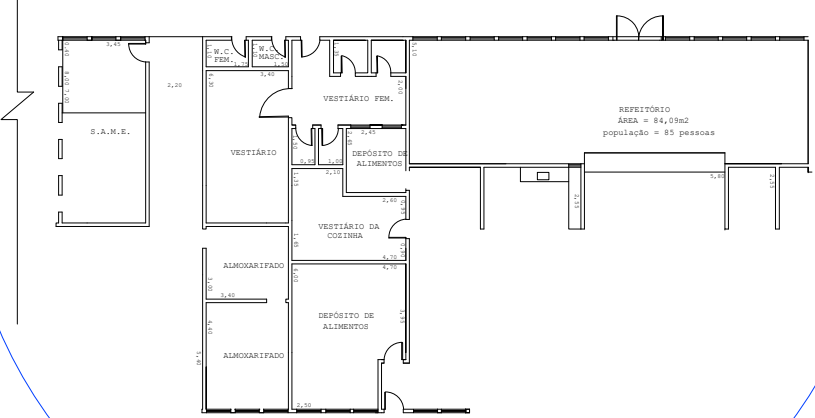
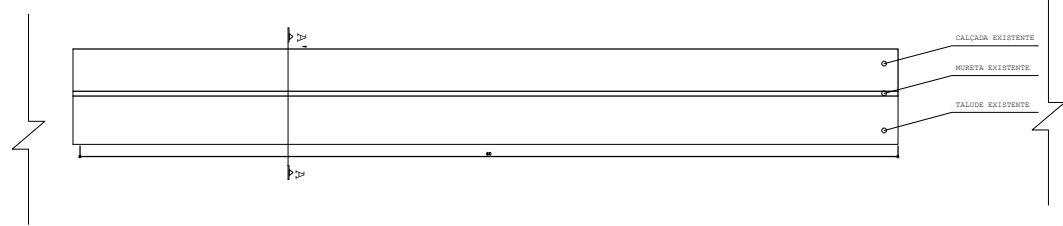
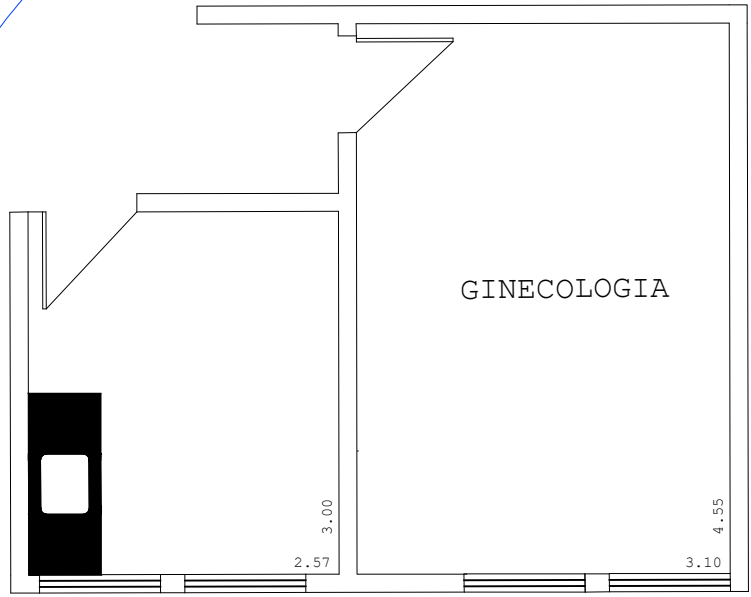


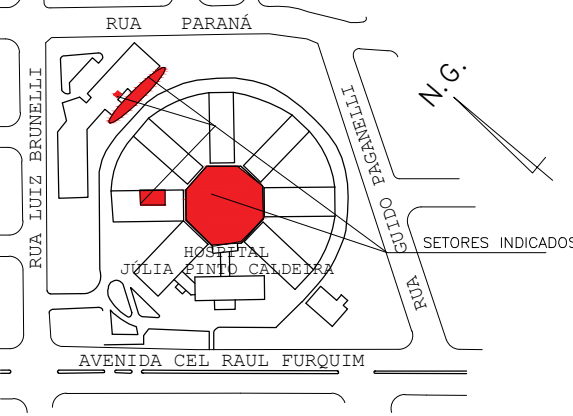
PLANTA DE LOCALIZAÇÃO
SEM ESCALA



PLANTA DE DEMOLIÇÃO



SITUAÇÃO SEM ESCALA



LUCAS GIBIN SEREN
PREFEITO MUNICIPAL

FABRÍCIO DANIEL BORGHINI PAZUELLO
ENGENHEIRO CIVIL CREA: 5070083758
Nº DA ART: 28027230210735836

PREFEITURA MUNICIPAL DE BEBEDOURO
ADM. 2021/2024
DEPARTAMENTO DE ENGENHARIA E OBRAS
CLIENTE:
HOSPITAL MUNICIPAL JULIA PINTO CALDEIRA
TÍTULO:
OBRAS DE ADEQUAÇÕES NO HOSPITAL MUNICIPAL
OBJETIVO:

	DATA	NOME
DES.	16/03/2021	FABRICIO
REV.	NASSER	
APR.		
ESCALA		PESO
INDICADAS		kg